



# The Road to Nowhere:

## How expanding Heathrow will bring our roads to a standstill



Over the past five years, Gatwick airport has invested £1billion in our airport. We now have a once in a lifetime opportunity to expand, delivering £90billion of economic benefits to the UK and creating 120,000 jobs.

Hidden in the depths of Heathrow's submission are complex plans to widen and tunnel some of the busiest sections of motorway in the UK. Tunnelling the M25 and widening the M4 will create months of chaos and years of congestion. And the taxpayer will have to foot the multi-billion pound bill.

LONDON *Gatwick*  
OBVIOUSLY.

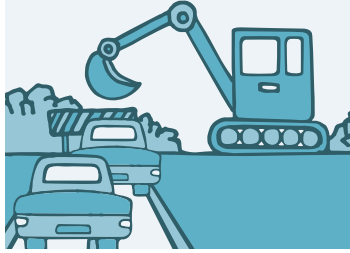
[gatwickobviously.com](http://gatwickobviously.com) // [@LGWobviously](https://twitter.com/LGWobviously)

LONDON *Gatwick*  
OBVIOUSLY.

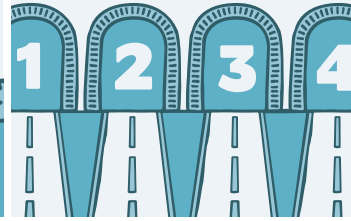
[gatwickobviously.com](http://gatwickobviously.com) // [@LGWobviously](https://twitter.com/LGWobviously)

## Heathrow's plan to dig up and tunnel the M25:

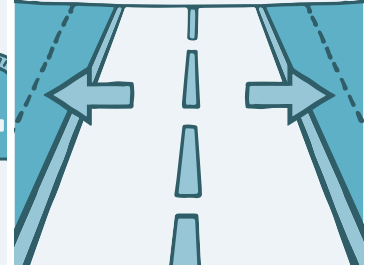
Heathrow will have to build the new runway over the M25 Motorway



To make this possible, Heathrow will have to create 4 new separate tunnels for the M25



On top of this, the M4 will also have to be widened



## The taxpayer will foot Heathrow's M25 bill:

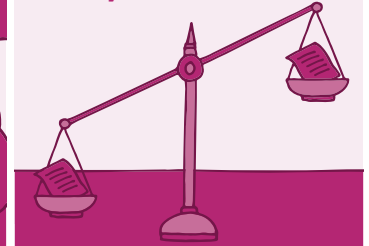
Heathrow's transport plans will cost £5.7bn



Heathrow want the taxpayer to fund £5bn



The bill could be deemed an anti-competitive, unlawful Government subsidy under EU law

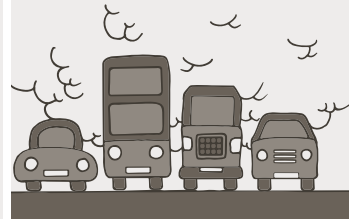


## Heathrow's complex M25 plan will take years:

The M25 roadworks could take up to four years to complete



Six million journeys will be delayed every month, causing millions of pounds of lost business and air pollution



No contingency plans have been seen and there will be no compensation for delays



## Heathrow's M25 misery will continue after construction:

The new runway will generate at least 1,800 extra vehicles at peak hours



Heathrow plans to introduce a congestion charge for people driving to the airport



The new tunnels could cause permanent restrictions on numbers of vehicles on the M25

